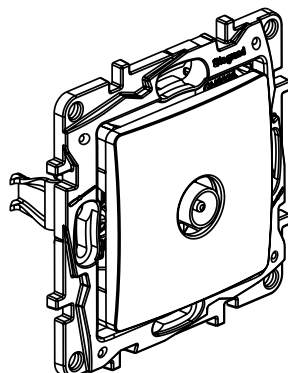


Niloé™

Cat. Nos.: 6 645 52/53/54/55 - 6 646 52/53/54/55


Male TV feedthrough and terminal sockets



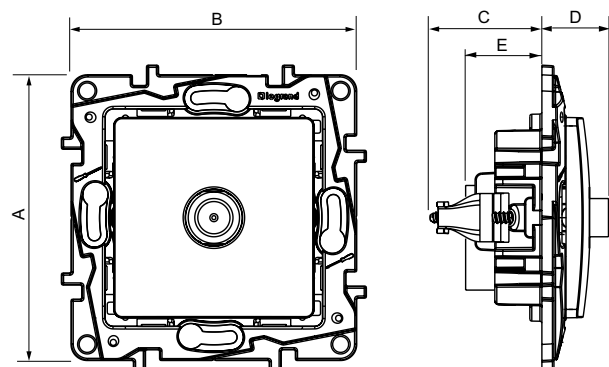
1. USE

Male TV feedthrough and terminal connectors
Recommended cables 17/19 VATC A
TNT & HD compatible
5-862 MHz
Mechanisms to be fitted with finishing plates
Flush-mounting or surface-mounting
Screw or clip fixing

2. RANGE

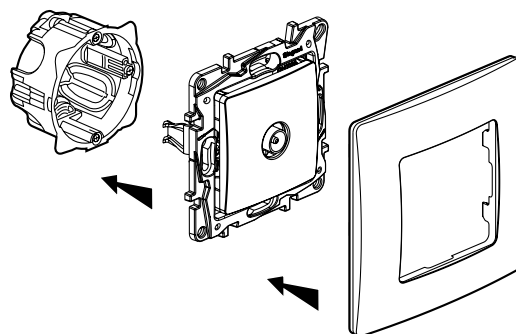
	Description	White	Ivory
	Male TV feedthrough sockets - 10 dB	6 645 52	6 646 52
	Male TV feedthrough sockets - 15 dB	6 645 53	6 646 53
	Male TV feedthrough sockets - 20 dB	6 645 54	6 646 54
	Male TV terminal sockets - 5 dB	6 645 55	6 646 55

3. DIMENSIONS (mm)

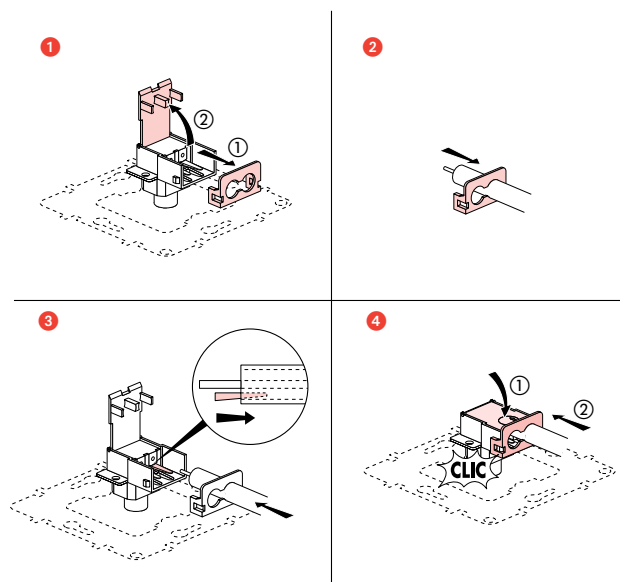


Cat. Nos.	A	B	C	D	E
6 645 52/53/54/55 6 646 52/53/54/55	75.8	75.8	27.6	19.6	19

4. POSITIONING



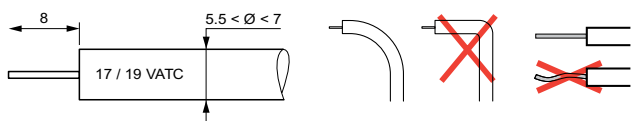
5. CONNECTION



Male TV feedthrough and terminal sockets

6. WIRING RECOMMENDATION

Stripped length



To prevent loss of impedance and a subsequent deterioration in performance caused by deformation of the coaxial cable, use the largest possible bending radius.

7. TECHNICAL CHARACTERISTICS

■ 7.1 Mechanical characteristics

IP: 21 D

IK: 04

■ 7.2 Materials

Poly gloss appearance

Colour: White (RAL 903) and Ivory (RAL 113)

Material: - Plate: ABS

- Cover plate: ABS

- Zero halogen

- UV resistant

- Motor: Zamac support/Zamac steel socket/steel plugs

Self-extinguishing:

+ 850°C/30 s for insulating parts holding live parts in place

+ 650°C/30 s for other parts made of insulating materials

■ 7.3 Electrical characteristics

- Characteristic impedance: 75 ohms

- Male TV connector Ø 9.52 mm conforming to IEC 61169-2

- Frequency bands: TV/SAT: 5 - 862 MHz

- Feedback channel on TV connector

- Shielding efficiency: Class B

- Max. Ø of incoming cable at entry: 7 mm

- The socket must provide galvanic isolation on the core line of the coaxial cable between the network access point and each of the user access points, in accordance with EN 50083-1.

- Contact resistance: 10 mΩ maximum

- Insulation resistance: in accordance with UTE C 90-125

- Harmonics and intermodulation products: during injection of a signal (maximum level 122 dBμV) in the return channel of one of the two user access points, the level of harmonics and intermodulation products delivered to the other access point must be 2.4 dBμV or less.

■ 7.4 Climate conditions

Storage and operating temperature: - 5°C to + 35°C

7. TECHNICAL CHARACTERISTICS (continued)

■ 7.5 Support

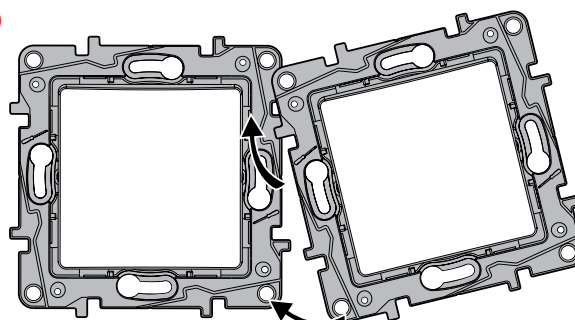
Material: Grey (RAL 737) polycarbonate, zero halogen

High impact resistance and torsional strength due to the thickness of the support

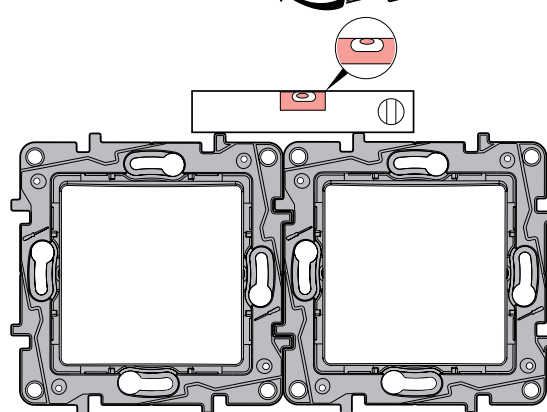
Easy guidance for positioning the mechanisms

Horizontal or vertical alignment without lifting up the mechanisms too much

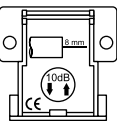
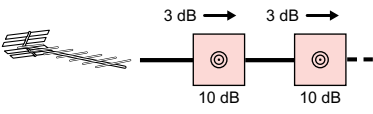
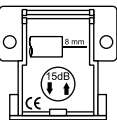
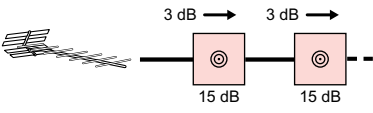
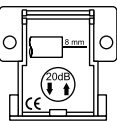
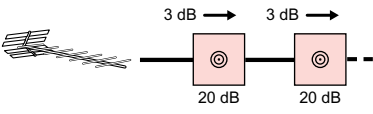
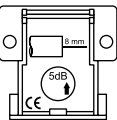
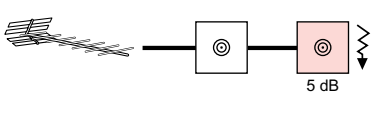
1



2



8. PERFORMANCE

TV (5 - 862 MHz)	6 645 52 6 646 52		
	6 645 53 6 646 53		
	6 645 54 6 646 54		
	6 645 55 6 646 55		

9. CLEANING

Clean the surface with a cloth.
Do not use acetone, tar-removing cleaning agents or trichloroethylene.

Caution: Always test before using other special cleaning products.